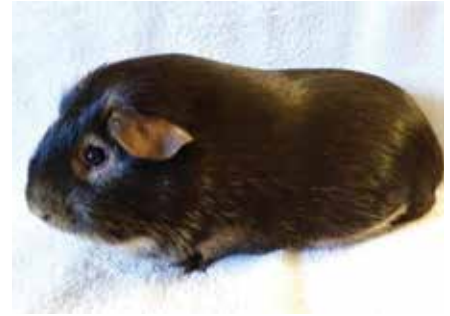


American Otter (added to Tan Pattern)



OTTER – Top Color is to be Beige, Black, Blue, Chocolate, or Lilac. Otter Markings around the eyes, pea spots, inside ears, nostrils, jowls, shoulders, inside of legs/feet, chest and belly. Flanks are to be evenly and thickly laced with Otter tipped hairs.

TOP COLOR:

Beige – Color is to be light brown, rich and even, carried to the skin; ears and foot pads to match. Allow for darker shading in juniors. Eyes – Pink.

Black – Color is to be a deep, rich black, carried to the skin; ears and foot pads to match. Eyes – Dark.

Blue – Color is to be a deep gray with an even slate cast, carried to the skin; ears and foot pads to match.

Eyes – Dark with Ruby Cast.

Chocolate - Color is to be a deep rich chocolate, carried to the skin; ears and foot pads to match. Eyes – Dark with or without Ruby Cast.

Lilac - Color is to be a light gray with an even purple cast, carried to the skin; ears and foot pads to match. Allow for darker shading in juniors. Eyes – Pink.

OTTER MARKINGS: To consist of Cream tipped hairs. Long tip color is desirable, showing minimal undercolor. Undercolor is to match the top color. Allow for darker Cream color in Beige and Lilacs for better contrast. Otter marking color is Cream.

10 Points Belly Markings are to be as wide as possible, clear and free of muddiness. Belly color should be visible from the sides of the posed cavy. Chest markings are to be full, clear and high.

5 Points Line of demarcation on sides and throat to be high, clear and distinct

5 Points Eye Circles to be well defined and prominent around the entire eye.

3 Points Nostril/Mouth should be prominently outlined. Jowl markings should be clear, wide and long, following the jaw line.

3 Points Shoulder Markings are to be a bold tapered line, beginning at the top of the chest, continuing over each shoulder and up the sides.

3 Points Feet/Legs, on the inside of each, should show cream, with top color on the outside. Toenails are to match top color.

3 Points Pea Spots are to be prominent.

3 Points Sides should be evenly and thickly laced with cream tipped hairs, extending well up the sides. This lacing of cream tipped hairs serves to enhance the Otter Markings.

Faults - Cream on nostrils, extending up to the eye circles – giving a mealy appearance. Stray cream hairs in top color—not to be confused with desirable side lacing. Very muddy belly. Narrow belly band. Indistinct markings.

Disqualifications from Competition – Patches of foreign color including cream in top color—not to be confused with cream tipped hairs on flanks. Flesh spots on Black, Chocolate, and Blue.

NOTE- When the marking color is extended down the leg and onto the heel pad, this is not considered a flesh spot but an extension of the marking.

NOTE- Missing eye circles, nostril/mouth, shoulder, feet/leg, pea spots, or lacing are not disqualifications.

