

Lilac Dutch



LILAC—A medium dove-gray, with a delicate pink tint veiling the surface. Color must be carried well down the hair shaft. The undercolor is to be a pale dove-gray. Eyes – blue-gray, ruby cast is desired.

Faults—Showing a decided blue cast or complete lack of pink tint to color, extremely light gray coat, mealiness, patches of rust.

Insert for 2021-2024 Edition ARBA Standard of Perfection

Eligible to be entered in all ARBA sanctioned shows as exhibition animals. May not compete for Best of Breed/Best in Show

BLACK DWARF PAPILLON



Black—The color is to be an intense glossy black. The black color should be carried as deep as possible to a slate-blue undercolor. Eyes—Brown

Faults—Any markings having excessive white hairs, faded or light surface color.

Disqualifications—Markings containing two colors.

Insert for 2021-2024 Edition ARBA Standard of Perfection

Eligible to be entered in all ARBA sanctioned shows as exhibition animals. May not compete for Best of Breed/Best in Show

BLUE DWARF PAPILLON



Blue—The color is to be a rich, clear, dark blue that is carried as deep as possible to a slate blue undercolor. Eyes—Blue-gray

Faults—Any markings having excessive white hairs, faded or light surface color.

Disqualifications—Markings containing two colors.

Insert for 2021-2024 Edition ARBA Standard of Perfection

Eligible to be entered in all ARBA sanctioned shows as exhibition animals. May not compete for Best of Breed/Best in Show

Sable Point Lionhead



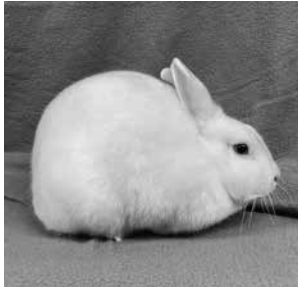
Sable Point-Color is to be a rich sepia brown on nose, ears, feet and tail. Marking color is to shade rapidly to a rich creamy body color. Some slightly darker shading is permissible on the saddle but undesirable. Entire body is to be creamy color, and the undercolor is to be light cream or white. Eyes-Brown. Toenails-colored.

Fault-Blotchy color on body; markings too light, so as to lose the marked contrast between the dark markings and the rich creamy body color.

Insert for 2021-2024 Edition ARBA Standard of Perfection

Eligible to be entered in all ARBA sanctioned shows as exhibition animals. May not compete for Best of Breed/Best in Show

Blue Eyed White Mini Satin

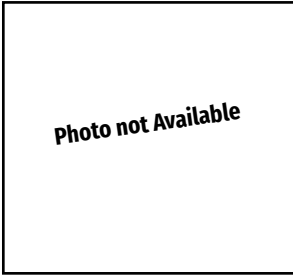


Blue-Eyed-White-The color is to be white, with a light ivory cast. Eyes-Blue.

Insert for 2021-2024 Edition ARBA Standard of Perfection

Eligible to be entered in all ARBA sanctioned shows as exhibition animals. May not compete for Best of Breed/Best in Show

Sable Mini Satin



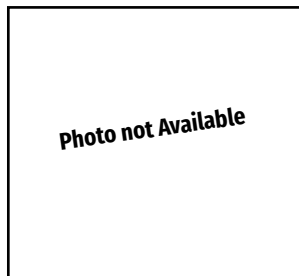
SABLE—The surface is to be a rich sepia brown on the head, ears, back, outside of legs, and the top of the tail. The surface color will fade to a lighter sepia on the sides, chest, belly, inside of the legs, and underside of the tail. Dark face color is to fade from the eyes to the jaws and all blending of color is to be gradual and free from blotches or streaks. The undercolor will be slightly lighter than the surface color. Eyes—Brown. Ruby cast permissible.

Faults—Fault animals that have streaks, blotches, or poor color blending. Animals that are too light or too dark are to be faulted. Scattered white hairs, or lack of darker color in the loin area is a fault.

Insert for 2021-2024 Edition ARBA Standard of Perfection

Eligible to be entered in all ARBA sanctioned shows as exhibition animals. May not compete for Best of Breed/Best in Show

Smoke Pearl Mini Satin



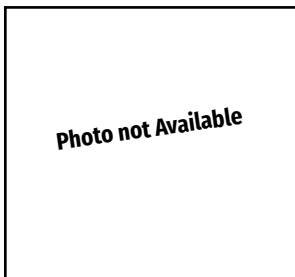
SMOKE PEARL—The surface color is to be a rich smoke gray on the head, ears, back, outside of legs, and the top of the tail. The surface color will fade to a pearl gray on the sides, chest, belly, inside of legs, and underside of the tail. Dark face color is to fade from the eyes to the jaws and blend with chest color. All blending of color is to be gradual and free from blotches or streaks. The undercolor will be slightly lighter than the surface color. Eyes—Blue-gray

Fault—Fault animals that have streaks, blotches, or poor color blending. Animals that are too light or too dark are to be faulted. Scattered white hairs or the lack of a darker color in the loin area is a fault.

Insert for 2021-2024 Edition ARBA Standard of Perfection

Eligible to be entered in all ARBA sanctioned shows as exhibition animals. May not compete for Best of Breed/Best in Show

Beige Lutino Netherland Dwarf



Faults-Animals with coat color too light in shade or lacking the lilac dove-gray shading.

Note to Judges-*The color of the iris can be more pronounced in the older animal.*

Disqualification-Any eye color other than described.

BEIGE LUTINO-Coat color: The adult coat is to be a rich and even shade of cream throughout, with a lilac dove-gray shading to the coat. Color is to be carried as far down the hair shaft as possible. The belly color to be the same as the body, but duller and with undercolor being a soft lilac-gray. Juniors have more prominent dove-gray shading. Coat becomes more golden with age.

Nails-Light or clear in color

Eyes-Pupil to be pink to ruby-red, with darker pink to red desirable. Iris to be pink with a light bluish cast permissible.

Insert for 2021-2024 Edition ARBA Standard of Perfection

Eligible to be entered in all ARBA sanctioned shows as exhibition animals. May not compete for Best of Breed/Best in Show

Champagne Netherland Dwarf



Champagne

Please Note: *The color is for a Black Self with the Champagne silvering gene. Other colors can be 'silvered/champagned'/ but their color expression [phenotype] will not be the same as the Black Self.*

The body color is to be a bluish white. The whole body is to be moderately and evenly interspersed with longer jet black hairs, giving an old silver effect when viewing from a distance.

The fur is to have a rich gloss. The nose and muzzle are to be slightly darker than the body color to form the butterfly.

Head and ears are to match body color as closely as possible. Undercolor is to be dark slate blue, carried as deep down the shaft as possible, with the allowance for fading in seniors showing age. Eyes–Brown.

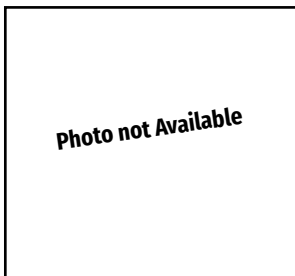
Faults–Lack of jet black hairs; brassiness; faded undercolor; butterfly too dark; too dark or light in body color; head and ears dark in color; but allowing for slightly heavier pigmentation when combined with a good dark undercolor.

Disqualifications–White patch or spot(s) (not molt spots); cream color or yellow cast; less than 50% [Champagne] color showing on the head and body.

Insert for 2021-2024 Edition ARBA Standard of Perfection

Eligible to be entered in all ARBA sanctioned shows as exhibition animals. May not compete for Best of Breed/Best in Show

Blue Silver Fox



Blue-Surface color is to be a uniform medium-rich blue extending as far down the hair shaft as possible to a slate blue undercolor. Eyes-Blue-gray.

Faults-Brownish or other tinges; too light of an undercolor bordering on light gray.

Disqualifications-White undercolor or white toenails.

Insert for 2021-2024 Edition ARBA Standard of Perfection

Eligible to be entered in all ARBA sanctioned shows as exhibition animals. May not compete for Best of Breed/Best in Show

Otter Britannia Petite (Blue, Chocolate, Lilac)



Blue—The main body color is to be a rich medium to dark blue, shading to a lighter blue undercolor. Color is to be uniform over the entire body. Toenails are to be dark. Eyes—Blue-gray.

Chocolate—The main body color is to be medium chocolate brown to dark brown, undercolor to be dove. Color to be uniform over the entire body. Toenails to be dark. Eyes—Brown with a ruby cast in subdued light.

Lilac—The main body color is to be dove gray with a pinkish tint. Color should run deep towards the skin, with a paler

dove undercolor. Toenails are to be dark. Eyes—Blue gray with a ruby cast in subdued light.

The belly surface color may range from white to pale cream with the undercolor to correspond with each variety's undercolor. The underside of the chin and tail should be pale cream with the corresponding undercolor for each variety.

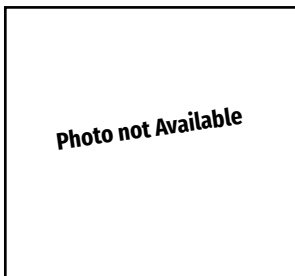
The tail may or may not show undercolor. Markings and ticking in the chocolate variety are to be orange; in the blue and lilac varieties they are to be fawn. Nostrils and triangle are to be orange to fawn the others may be lighter in color. The chest will have a mixture of both body and marking color which will merge into the body color in front of the shoulder. Prominent orange or fawn ticking is to be evenly distributed around the chest, sides, and lower hindquarters.

Faults—Cream ticking on the face, faded marking or body colors, light undercolor.

Insert for 2021-2024 Edition ARBA Standard of Perfection

Eligible to be entered in all ARBA sanctioned shows as exhibition animals. May not compete for Best of Breed/Best in Show

Smoke Pearl Lionhead



Eyes—Blue-gray. Ruby cast permissible.

Faults—Streaks, blotches or poor color blending; scattered white hairs; lack of darker color in the loin area; animals that are too light or too dark are undesirable.

Disqualifications—Non-matching toenails on the same foot , or white toenails.

Smoke Pearl—The surface color is to be a rich smoke gray on the head, ears, back, outside of legs and top of tail. The surface color will fade to a pearl gray on the sides, chest, belly, inside legs and underside of tail. Dark face color is to fade from the eyes to the jaws and all blending of color is to be gradual and free from blotches and streaks. The undercolor will be slightly lighter than the surface color. Dark toenails are preferred, but light toenails showing pigmentation are permissible. Difference in pigmentation between rear and front toenails is permitted, but all front toenails should match on same foot and all rear toenails should match.

Insert for 2021-2024 Edition ARBA Standard of Perfection

Eligible to be entered in all ARBA sanctioned shows as exhibition animals. May not compete for Best of Breed/Best in Show

Tortoise Shell Britannia Petite

Black, Blue, Chocolate, Lilac



Color—Main body color of the Black or Chocolate varieties is to be a bright orange to a rusty orange shading to a smokey black or smokey chocolate over the lower rump, lower sides and on surface of the belly. The ears, feet and underside of tail to be the same smokey black to smokey chocolate. Shading on the face to be darkest at the nose and muzzle area blending to a lighter shade along the jaw line. Top of tail to match surface color as closely as possible. Surface color is to extend well down the hair shaft to a light cream undercolor.

Main body color of the Blue or Lilac varieties to be fawn with shading colors to be shades of blue or lilac. Undercolor to be light cream to white. Eyes—Black and Chocolate to be Brown. Blue and Lilac to be Blue-gray.

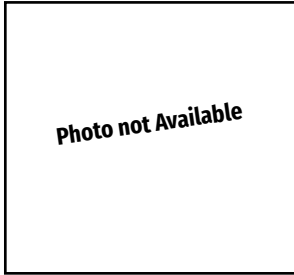
Faults—Scattered white hairs; too light or too dark surface color; lack of distinct shading.

Disqualifications—White surface color on belly and/or underside of tail.

Insert for 2021-2024 Edition ARBA Standard of Perfection

Eligible to be entered in all ARBA sanctioned shows as exhibition animals. May not compete for Best of Breed/Best in Show

Sable Marten Mini Rex



evenly distributed around the chest, sides, and lower hindquarters. Belly is to be white to silver white and can show a slight darker undercolor. Eyes—Brown
Faults—Fault animals that have streaks, blotches, or poor color blending. Mealiness on the head, ears, or body is undesirable. Animals that are too light or too dark are to be faulted. Scattered white hairs or lack of darker color in the loin area is a fault.

Sable Marten—The surface color of the head, outside of the ears, back, outside of the legs, and the top of the tail is to be rich sepia brown with a slightly lighter undercolor. The surface color will fade to a lighter sepia on the sides and chest. All blending of color is to be gradual and free from blotches and streaks. The nostrils, eye circles, jowls, inside of ears, triangle, collar, back of fore feet, inside of the hind feet and legs, belly and the underside of the tail are to be silver-white color. Prominent silver-white guard hairs are to be

Insert for 2021-2024 Edition ARBA Standard of Perfection

Eligible to be entered in all ARBA sanctioned shows as exhibition animals. May not compete for Best of Breed/Best in Show

Shadow Lutino Netherland Dwarf



Variety to be shown in the AOV group.

Coat color—The coat is to be a light orange with a tinge of blue shading/tipping to the hair, most prominent on the sides. Undercolor is light slate. The surface color of the belly, back of forelegs, inside of hind legs, top of hind feet, and underside of lower jaw is to be white with an off-white base. The inside of the ears are to be white, while the nostrils and eye circles are to be creamy white. Undercolor of belly

is light light slate The coat darkens with age and is not considered a fault. Nails—Light or clear in color. Eyes—Pupil to be pink to ruby red, with darker pink to red desirable. Iris to be pink with a light bluish or lilac cast permissible.

Faults—Animals lacking undercolor on the belly.

Disqualification from Competition—Any other eye color than described.

Note to Judges—*The color of the iris can be more pronounced in the older animal.*

Insert for 2021-2024 Edition ARBA Standard of Perfection

Eligible to be entered in all ARBA sanctioned shows as exhibition animals. May not compete for Best of Breed/Best in Show

Orange Lutino Netherland Dwarf



inside of the ears is to be white, while the nostrils and eye circles are to be creamy white. The coat darkens with age, and is not considered a fault. Nails-White or clear in color. Eyes—Pupil to be pink to ruby red, with darker pink to red desirable. Iris to be pink with a light bluish lilac cast permissible.

Faults—Animals with a bluish tinge to the coat or undercolor.

Disqualification—Any other eye color than described.

Note to Judges—*The color of the iris can be more pronounced in the older animal.*

Variety to be shown in the AOV group.

Coat color—The surface color of the body is to be a bright orange on the head, outside of ears, loin, and top of the tail. The color may fade to a lighter orange on the flanks and chest. Color to be carried well down the hair shaft to an off-white base. The surface color of the belly (except for orange lap spots), back of forelegs, inside of hind legs, top of hind feet, and underside of lower jaw is to be white with an off-white base. The underside of the tail and around the vent is to be white to the skin. The

Insert for 2021-2024 Edition ARBA Standard of Perfection

Eligible to be entered in all ARBA sanctioned shows as exhibition animals. May not compete for Best of Breed/Best in Show

Gold Dutch



Extreme ear lacing and/or ticking to head and ears. Color on belly or rear legs so light as to fail to show clearly discernible undercut and/or stops.

Gold—Color to be carried well down the sides and around the belly to match the top color as closely as possible. Slightly lighter belly color and orange lap spots are acceptable. Color on the top of tail is a deep orange. The underside of tail and around the vent is to be light cream. The insides of ears and eye circles are to be light cream.

Eyes—Brown

Faults—Cut severely for ticking shown on head, cheeks and ears. Any shading shown to any area of top color and lower flank. Lighter color fading down the flanks.

Disqualifications from Competition—Very pale yellowish top color.

Insert for 2021-2024 Edition ARBA Standard of Perfection

Eligible to be entered in all ARBA sanctioned shows as exhibition animals. May not compete for Best of Breed/Best in Show

Blue Eyed White Lionhead



Blue Eyed White—Color is to be a pure white throughout.
Eyes—Blue

Insert for 2021-2024 Edition ARBA Standard of Perfection
Eligible to be entered in all ARBA sanctioned shows as exhibition animals. May not compete for Best of Breed/Best in Show

Insert for 2021-2024 Edition ARBA Standard of Perfection
Eligible to be entered in all ARBA sanctioned shows as exhibition animals. May not compete for Best of Breed/Best in Show