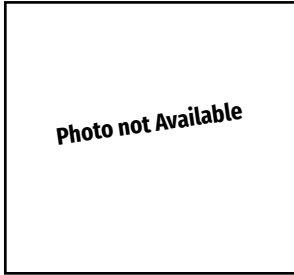


Sable Marten Mini Rex



evenly distributed around the chest, sides, and lower hindquarters. Belly is to be white to silver white and can show a slight darker undercolor. Eyes—Brown
Faults—Fault animals that have streaks, blotches, or poor color blending. Mealiness on the head, ears, or body is undesirable. Animals that are too light or too dark are to be faulted. Scattered white hairs or lack of darker color in the loin area is a fault.

Sable Marten—The surface color of the head, outside of the ears, back, outside of the legs, and the top of the tail is to be rich sepia brown with a slightly lighter undercolor. The surface color will fade to a lighter sepia on the sides and chest. All blending of color is to be gradual and free from blotches and streaks. The nostrils, eye circles, jowls, inside of ears, triangle, collar, back of fore feet, inside of the hind feet and legs, belly and the underside of the tail are to be silver-white color. Prominent silver-white guard hairs are to be

Insert for 2021-2024 Edition ARBA Standard of Perfection

Eligible to be entered in all ARBA sanctioned shows as exhibition animals. May not compete for Best of Breed/Best in Show