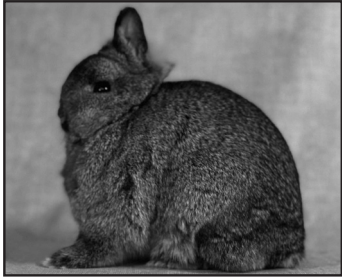


Silver Tipped Steel Netherland Dwarf



STEEL (Silver Tipping) Black, Blue, Chocolate and Lilac – The surface color of the body is to be black, blue, chocolate, or lilac with an even silver ticking over the head, ears, chest, top, and sides of the body, legs and feet. The undercolor is to be an extension of the surface color. The nape of the neck and around the nostrils is to match the surface color or match the ticking color. The surface color of the belly is to match the surface color with a greyish-silver cast and lap spots permissible. The upper tail color is to match the surface color and the underside of

the tail to match the belly color as close as possible. Eyes–Brown or Blue-Gray

Faults–Fault animals with absence of ticking on head, ears, legs, or loin.

Disqualifications from Competition–Disqualify animals with obvious banded hair shaft on the back. A slight banding on the lower part of the body is permissible.

Note: *All steels compete together.*

Insert for 2021-2024 Edition ARBA Standard of Perfection

Eligible to be entered in all ARBA sanctioned shows as exhibition animals. May not compete for Best of Breed/Best in Show