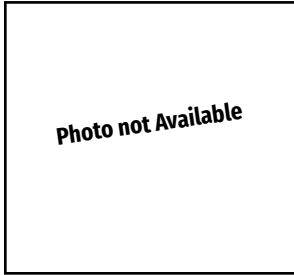


Sable Mini Satin



SABLE—The surface is to be a rich sepia brown on the head, ears, back, outside of legs, and the top of the tail. The surface color will fade to a lighter sepia on the sides, chest, belly, inside of the legs, and underside of the tail. Dark face color is to fade from the eyes to the jaws and all blending of color is to be gradual and free from blotches or streaks. The undercolor will be slightly lighter than the surface color. Eyes—Brown. Ruby cast permissible.

Faults—Fault animals that have streaks, blotches, or poor color blending. Animals that are too light or too dark are to be faulted. Scattered white hairs, or lack of darker color in the loin area is a fault.

Insert for 2021-2024 Edition ARBA Standard of Perfection

Eligible to be entered in all ARBA sanctioned shows as exhibition animals. May not compete for Best of Breed/Best in Show