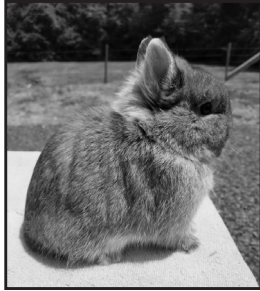


Fox Netherland Dwarf
Black, Blue, Chocolate, Lilac



Variety to be shown in the Tan Pattern Group

Fox—(Black, Blue, Chocolate and Lilac shading colors)

Black or Chocolate color is to be a rusty orange on the saddle; Blue or Lilac color is to be sooty fawn on the saddle, with all varieties blending into a shading of darker color over the lower rump and haunches. The top color is to carry down and blend into a dark cream undercolor next to the skin. A bluish tint to the undercolor is permissible. Top of tail is to match the shading color. Shading on the head is darkest at the whisker bed, blending into a lighter shade along the jaw line and darkening again at the ear base, outside of ears to be shading color. The belly, nostrils, eye circles, jowls, underside of the tail, inside of the ears, back of the fore feet and the inside of the hind feet and legs are

to be creamy white, highlighted by an orange or fawn marking as it meets the rusty orange or sooty fawn color of the body. The triangle and the collar are to be orange or fawn. Prominent orange or fawn ticking is to be evenly distributed around the chest, sides, and lower hindquarters. Eyes – Black and Chocolate to be Brown. Blue and Lilac to be Blue-Gray.

Faults—Fault animals with mealiness on the ears, head, or body, too much shading as to hide the body color, or too little shading which allows body color on shaded areas.

Disqualifications From Competition—Complete lack of shadings.

Insert for 2021-2024 Edition ARBA Standard of Perfection
Eligible to be entered in all ARBA sanctioned shows effective November 1, 2023