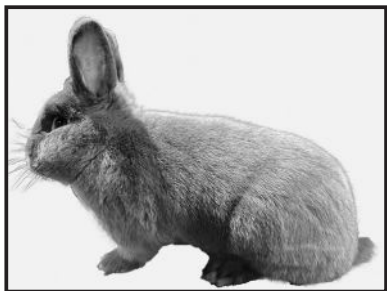


## Blue Holicer



### SCHEDULE OF POINTS

<b>GENERAL TYPE</b> .....	<b>45</b>
Body .....	15
Head .....	15
Ears .....	10
Feet, Legs and Bone .....	5
<b>FUR</b> .....	<b>20</b>
<b>COLOR</b> .....	<b>30</b>
Surface Color/Uniformity .....	15
Undercolor .....	15
<b>CONDITION</b> .....	<b>5</b>
<b>TOTAL POINTS</b> .....	<b>100</b>

### SHOWROOM CLASSES & WEIGHTS

**Senior Bucks & Does**—6 months of age and over, weight 5 ½ to 7 ¼ pounds

**Junior Bucks & Does**—Under 6 months of age. Minimum weight 3 pounds, maximum weight 6 pounds.

**Note:** *No animal may be shown in a lower age classification than its true age.*

**POSING**—The Blue Holicer is to be posed lightly on the front feet with the head carried in a natural position. When posed correctly, the front legs should be fully extended with daylight showing under the chest. Animals should not be pushed together to create a compact topline, nor should the animal's head be held down or placed on the judging table.

### GENERAL TYPE

**BODY**—Points 15: The body is to be stocky and cylindrical. The topline is to be flat starting at the nape of the neck, continuing back to a point over the center of the hips and falling in a smooth curve downward to the base of the tail. The shoulders are to be of the same width as the hindquarters. The loin is to be well-filled and the body is to be plump and firm of flesh. Hindquarters are to be smooth and round when viewed from any direction. The tail is to be carried erect. A small dewlap is permissible in senior does..

**Fault**—Narrow or long in body; tapered body with shoulders narrower than hindquarters; pinched or undercut in lower hindquarter. Any indication of an arched top line.

Insert for 2021-2024 Edition ARBA Standard of Perfection

*Eligible to be entered in all ARBA sanctioned shows effective November 1, 2023*

**Disqualifications From Competition**—Extremely narrow and long body with a narrow chest.

**HEAD**—The head should be short, wide and well rounded with full cheeks and good width of brow. Head may be bolder and more developed in bucks than does. The head is to be set close to the body.

**Faults**—Pinched muzzle.

**Disqualifications From Competition**—Extremely narrow or long head.

**EARS**—Points 10: Ears are to be erect in carriage, thick in substance and well furred with a wide open ear base and well rounded ear tips. Ears are to balance with the body.

**Fault**—Thin or folded ears. Slightly V in ear carriage.

**Disqualifications From Competition**—Excessively V in ear carriage, ear length less than 3 or more than 4 3/4 inches.

**FEET & LEGS**—Points 5: The legs are to be short and straight with heavy bone. Toenails are to be dark.

**Disqualifications From Competition**—Mismatched toenails; white toenail(s).

**FUR**—Points 20: (Slow Rollback) The coat is unique and has a very thick undercoat. It is to be very dense with enough resilience to allow it to roll back to its natural position when stroked from the hindquarters to the shoulders. Preferred length is 1 inch.

**Fault**—Fur that is harsh, silky or wooly; short, flyback or standing coat; fur that is longer or shorter than 1 inch.

**Disqualifications From Competition**—Lack of adequate undercoat; fur that is over 1 ½ inches or under ½ inch.

**COLOR**—Points 30:

**SURFACE COLOR**—Points 15: Surface color is to be a bright, clear, lustrous medium blue, to resemble the bluing of steel, and uniform over the entire body. The belly and underside of tail are to match the surface color but are lacking in luster due to the short, dense coat.

Eyes – Blue-gray

**Fault**—Uneven body color; few scattered white hairs; rust colored fur, color too light or too dark.

**Disqualifications From Competition**—Excessive scattered white hairs; ticking or silvering; color so dark as to have a purplish luster or so light as to resemble lilac; light color on the nose and muzzle.

**UNDERCOLOR**—Points 15: The surface color should carry well down the hair shaft to a slightly lighter undercolor.

**Fault**—Lacking depth of color

**Disqualifications From Competition**—White undercolor

**Condition**—Points 5: Per ARBA definition.